



# Fall 2022 School Board Update: 10/5/2022

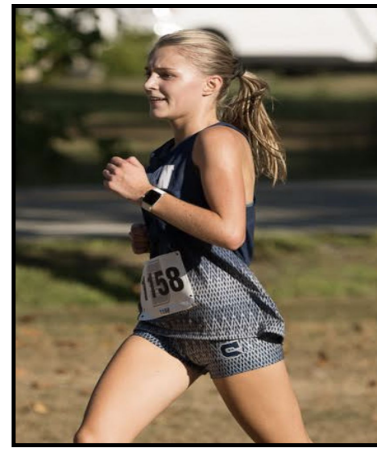
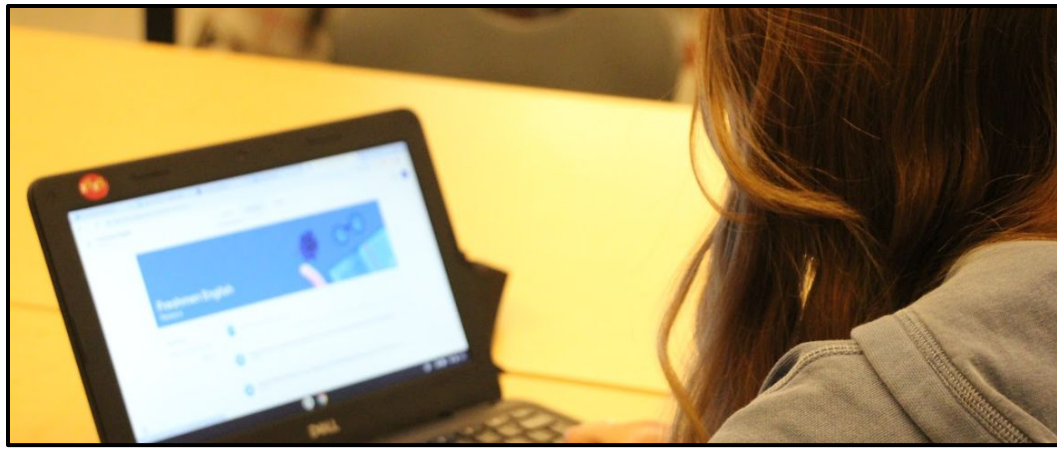
Jennifer Michitson, Principal  
Dr. Robert Dawson, Assistant Principal, Athletic Director  
Nichole O'Brien, Assistant Principal, Curriculum Director  
Timothy Westphal, Assistant Principal  
Heidi Leavitt, Director of School Counseling

[PRESENTATION LINK](https://bit.ly/SanbornFall2022BoardPresentation): <https://bit.ly/SanbornFall2022BoardPresentation>

# Tonight's Topics:

- First month update
- October 1st enrollments
- Course offerings  
2022-2023
- Review of the new  
grading system and  
academic expectations





# October 1st Enrollment

| RESIDENCE |          |        |         | GRADE     | TOTAL ENROLLMENT   |
|-----------|----------|--------|---------|-----------|--------------------|
| OTHER     | KINGSTON | NEWTON | FREMONT |           |                    |
|           | 45       | 48     | 43      | <b>12</b> | 136                |
|           | 50       | 43     | 45      | <b>11</b> | 138                |
|           | 49       | 40     | 40      | <b>10</b> | 129                |
|           | 57       | 43     | 32      | <b>9</b>  | 132                |
|           |          |        |         |           | <b>GRAND TOTAL</b> |
|           | 201      | 174    | 160     |           | <b>535</b>         |

# Course Offerings

Art - **15 different courses** - Ceramics, Studio Art, Drama

Business Technology - **12 different courses** - Modern Media, Robotics, Financial Literacy

Industrial Technology - **10 different courses** - Woodworking, CAD, Small Engine Repair

English - **21 different courses** - Real World English, Sports Literature, AP Literature, Gothic Literature, Running Start

Math - **17 different courses** - Aviation, Running Start, Pre-Calc, AP Calc

Music - **5 different courses** - Symphonic Band, Concert Choir, History of Rock and Roll

PE/Health/Wellness - **7 different courses** - Foods and Nutrition, Strength Training, Health, Team Sports

Science - **15 different courses** - Brain and Behavior, Biology, AP Physics, Astronomy

Social Studies - **9 different courses** - Global Studies, Psychology, SNHU Sociology, AP U.S. History

World Languages - **12 different courses** - Spanish and French 4, Introduction to Japanese, World Culture through Virtual Travel

Seacoast School of Technology - **69 students** are taking 2 periods/day at SST

Northern Essex Community College - **36 students** are taking 68 classes at NECC

Extended Learning Opportunities and Internships - **92 students** are taking at least 1 period of an ELO or Internship. Some are taking 2.



# New Grading System



## **Sanborn Regional High School Grading and Reporting Manual 2022-2023 School Year**

### **Introduction:**

This grading manual was created in order to provide a clearly communicated outline of the Sanborn Regional High School's grading and reporting procedures. We recognize that the new grading and reporting system is a big shift from previous years. The school administration team can help answer questions you may have to bring us to some common understandings of our grading and reporting procedures. For the senior class of 2023, flexibility will be at the forefront of implementation.

# Academic Expectations

## Grading Scale:

|    |        |    |       |    |       |   |      |
|----|--------|----|-------|----|-------|---|------|
| A+ | 97-100 | B+ | 87-89 | C+ | 77-79 | F | 0-69 |
| A  | 93-96  | B  | 83-86 | C  | 73-76 |   |      |
| A- | 90-92  | B- | 80-82 | C- | 70-72 |   |      |

## Reassessment Procedures:

Eligible students will have one reassessment opportunity per summative assessment per quarter given the following criteria are met:

- The original summative assessment was completed and submitted on time.
- The original summative assessment score is below 80%.
- All related formative assessments/assignments and/or homework has been attempted.

Students eligible for a reassessment must complete a reassessment form and contact their teacher to initiate the process within five academic calendar days from the date the summative assessment was returned to the student. The timeline for reassessment will be determined when the student and teacher meet to review the reassessment form. The maximum score a student can receive on a reassessment is 80%.

## Due Dates and Deadlines:

Assignments will have due dates and deadlines that are clearly communicated to students with appropriate time allotted to complete the work. Any work that is not submitted by the allotted due date will be entered into the gradebook as a zero.

## Missing Work/Make-up Work

If a student has an excused absence and misses a new formative assessment/assignment, summative assessment, or homework, the student and the teacher will develop a plan prior to (if applicable) or after the absence(s) to complete the make-up work with no less time than the amount of days missed. For example, if a student is absent for three days, then they will have three days to complete the missing/make-up work. If a student is aware of an upcoming planned absence(s), the student should initiate a plan for make-up work with the teacher prior to the absence(s).

## Late Work

**Formative Assessments/Assignments** - Formative assessments/assignments will not be accepted past the summative assessment and/or unit.

**Summative Assessments** - If a student does not submit a summative assessment on its due date, the student will not be eligible for reassessment. If a summative assessment is submitted within five academic calendar days after the due date, the maximum score a student will receive is 80%.

**Homework** - If a student does not submit homework on its due date, then it will not be accepted.

Other Academic Expectations, GPA Information, and Academic Expectations around attending Prom can be found in the [2022-2023 SRHS Student Handbook](#).



# Looking Ahead:

- Additional information on course enrollments
- Program of Studies considerations for the 2023-2024 school year
- Quarterly feedback from students, staff, and families on the Grading and Reporting Manual

